



AVer Room Management

for Windows and Mac

— **User Manual** —

DISCLAIMER

No warranty or representation, either expressed or implied, is made with respect to the contents of this documentation, its quality, performance, merchantability, or fitness for a particular purpose.

Information presented in this documentation has been carefully checked for reliability; however, no responsibility is assumed for inaccuracies. The information contained in this documentation is subject to change without notice.

In no event will AVer Information Inc. be liable for direct, indirect, special, incidental, or consequential damages arising out of the use or inability to use this product or documentation, even if advised of the possibility of such damages.

TRADEMARKS

“AVer” is a trademark owned by AVer Information Inc. Other trademarks used herein for description purpose only belong to each of their companies.

COPYRIGHT

© 2026 AVer Information Inc. All rights reserved. | January 9, 2026

All rights of this object belong to AVer Information Inc. Reproduced or transmitted in any form or by any means without the prior written permission of AVer Information Inc. is prohibited. All information or specifications are subject to change without prior notice.

More Help

For FAQs, technical support, software and user manual download, please visit:

Non-USA

Download Center: <https://www.aver.com/download-center>

Technical Support: <https://www.aver.com/technical-support>

USA

Download Center: <https://www.averusa.com/business/support>

Technical Support: <https://averusa.force.com/support/s/contactsupport>

Contact Information

Headquarters

AVer Information Inc.
8F, No.157, Da-An Rd.,
Tucheng Dist., New Taipei City
236042, Taiwan
Tel: +886 (2) 2269 8535

USA Branch Office

AVer Information Inc., Americas
44061 Nobel Drive, Fremont, CA
94538, USA
Tel: +1 (408) 263 3828
Toll-free: +1 (877) 528 7824

Europe Branch Office

AVer Information Europe B.V.
Westblaak 134, 3012 KM,
Rotterdam, The Netherlands
Tel: +31 (0) 10 7600 550

Japan Branch Office

アバー・インフォメーション株式会社
〒160-0023 日本東京都新宿区
西新宿 3-2-26 立花新宿ビル 7
階
Tel: +81 (0) 3 5989 0290
お客様サポートセンター(固定電
話のみ): +81 (0) 120 008 382

Vietnam Branch Office

Công ty TNHH AVer Information
(Việt Nam)
Tầng 5, 596 Nguyễn Đình Chiểu,
P.3, Quận 3, Thành phố Hồ Chí
Minh 700000, Việt Nam
Tel: +84 (0) 28 22 539 211
Hỗ trợ kỹ thuật: +84 (0) 90 70
080 77

Korea Office

한국 에버 인포메이션 (주)
서울시 종로구 새문안로 92
(신문로 1 가,
광화문오피시아빌딩) 1831,
1832 호
Tel: +82 (0) 2 722 8535

Contents

Overview	1
System Requirements.....	1
Supported AVer Devices.....	1
Get Started.....	3
Install AVer Room Management.....	3
Batch Deploy AVer Room Management.....	3
Open and Quit AVer Room Management.....	4
Understand the Interface	5
Connect Your Device	7
Device Card Overview	7
Floating Live View Overview	8
Configure Device Settings	9
PTZ Control.....	10
Interface 1	11
Interface 2	13
Settings	15
System	15
Audio	16
Audio Tracking	17
Supported Devices.....	17
Compare Modes.....	17
Set Up in App Mode	18
Set Up FONE700 Ceiling Speakerphone.....	18
Set Up Dual-Camera Tracking	21
Set Up in Camera Mode	23

Video Conferencing Features 25

 IP Stream 25

 Keystone Correction (Windows only)..... 27

 Smart Gallery 29

 AVer Share 30

Troubleshoot 31

Overview

AVer Room Management, formerly known as PTZApp 2, is a free software for Windows® and Mac® computers that enables full control of AVer USB devices. Configure device settings including the PTZ controls, AI tracking functions, the advanced image and audio settings, and more.

System Requirements

	Windows	Mac
OS	Windows 10, 11 (64 bits)	MacOS 11.6 or later
CPU	Intel Core i5-6XXX 3.0GHz	1.3 GHz Intel Core i5
RAM	4G	8G
HDD	3G (free space)	3G (free space)

Supported AVer Devices

Video Conferencing Cameras

CAM130	VC322	VB130
CAM340	VC520	VB342
CAM340+	VC520+	VB342+
CAM520	VC520 Pro	VB342 Pro
CAM520 Pro	VC520 Pro2	VB350
CAM520 Pro2	VC520 Pro3	VB370A
CAM520 Pro3	VC540	
CAM530		
CAM540		
CAM550		
CAM570		

Professional Tracking Cameras

TR211	TR311HWV2
TR315	TR313V2
TR315N	TR323V2
TR335	TR323NV2
TR335N	TR333V2
TR535	PTC310HWV2
TR535N	PTC310UV2
TR615	PTC320UV2
	PTC320UNV2
	PTC330UV2

Professional PTZ Cameras

PTZ211

PTZ231

PTZ310UV2

PTZ310UNV2

PTZ330UV2

PTZ330UNV2

Medical Cameras (Limited functions)

MD120UI

MD330U

MD330UI

Distance Learning Cameras

DL10

DL30

Conference Speakerphone

FONE540

Ceiling Speakerphone

FONE700

Matrix Switchers

HUB30

HUB35-EXT35

Matrix Boxes

MT100

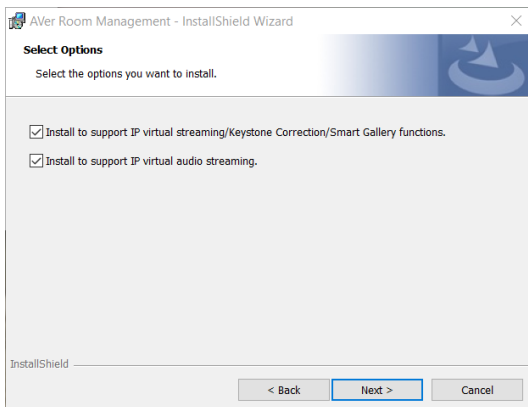
MT300

MT300N

Get Started

Install AVer Room Management

1. Download AVer Room Management from AVer Download Center (<https://www.aver.com/download-center>).
2. Double-click the downloaded .exe file.
3. Follow the on-screen instructions to install AVer Room Management. Keep these options checked.



Batch Deploy AVer Room Management

Perform a silent installation of the AVer Room Management Windows client using the Command Line Interface (CLI). This method is ideal for mass deployment via GPO, SCCM, or simple batch scripts.

Prerequisites:

- Administrator Privileges: The Command Prompt or deployment tool must be run with "Run as Administrator" rights.
- Installation File: Download AVer Room Management from AVer Download Center (<https://www.aver.com/download-center>). Ensure the .exe file is located in an accessible local or network folder.
- (Optional) Enterprise Management Account Info: Have your Enterprise Management account and password ready.

- Command Prompt:

INSTALL

Room Management executable file name `/s /v"/qn PARAMS=EID=Enterprise Management account;EPW=Enterprise Management password"`

Example: `AVerRoomManagement_v2.3.1020.0.exe /s /v"/qn PARAMS=EID=admin;EPW=admin"`

UNINSTALL

Room Management executable file name `/s /x /v"/qn"`


Example: `AVerRoomManagement_v2.3.1020.0.exe /s /x /v"/qn"`

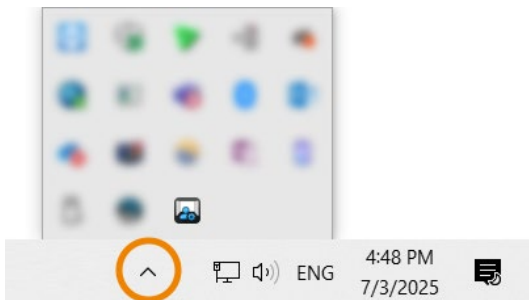
To batch deploy:

1. Open the **Start Menu**, search for **cmd**, right-click it, and select **Run as Administrator**.
2. Navigate to the folder containing the installer: `cd C:\Downloads\RM_Folder`
3. Copy and paste the command (modified with your credentials) and press **Enter**.
4. Wait 1-2 minutes for the background process to complete.

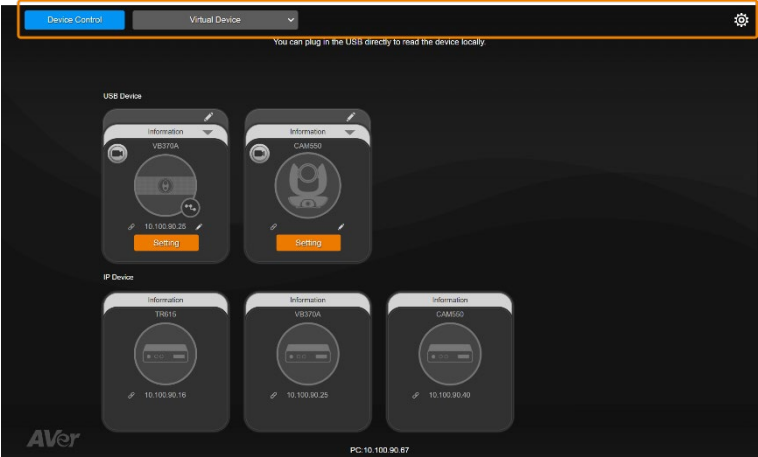
Open and Quit AVer Room Management

To open, double-click the AVer Room Management icon .

To quit, click the **Show Hidden Icons** arrow on the taskbar, right-click the AVer Room Management icon , and select **Quit**.



Understand the Interface



When you launch AVer Room Management, it opens to the **Device Control** page—your homepage for viewing and managing all connected AVer devices.

At the top, you'll find two main pages and a **gear icon** ⚙️ for system settings:

- **Device Control:** Lets you view connected devices, open live view, and access device settings.
- **Virtual Device:** Offers advanced features such as IP streaming, Keystone Correction, Smart Gallery, and AVer Share—tools designed to enhance your video conferencing and presentation experience.
- **System Settings** ⚙️ : Lets you change the system language, update software and more.

Item	Description
Language	Change the system language.
Hotkey Control	Turn hotkey on or off.
Room Management Update	Check for software update and view software version.
Usage Data	Opt-in or opt-out of providing anonymous usage data.
EM or ViewCare Pair	To connect to Room Management via Enterprise Management (or ViewCare), create a pairing account and password here. Once connected, you can remotely manage all of Room Management's USB-connected devices via either EM or VC software.

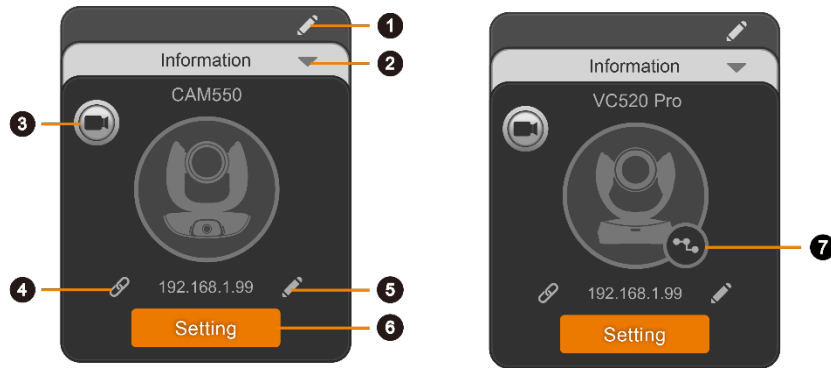
	<p>Note: When connecting to EM or VC software, the computer running Room Management must be connected to the internet.</p>
Device Management	<p>Room Management generates virtual USB cameras (VCam) and virtual audio devices (VMic/VSpk) to enhance your video conferencing experience. If they are not required, you can turn them off to simplify your system's device menus.</p> <p>Note: A computer restart may be required for these changes to take effect.</p>

Connect Your Device

To connect a device to AVer Room Management, you can do any of the following:

- **USB Connection:** Connect the device to your computer running the software using a USB cable. It will appear automatically as a device card in the Device Control page.
- **IP Connection:** Make sure both the device and your computer running the software are connected to the same local network (LAN). The device will appear automatically as a device card in the Device Control page.

Device Card Overview

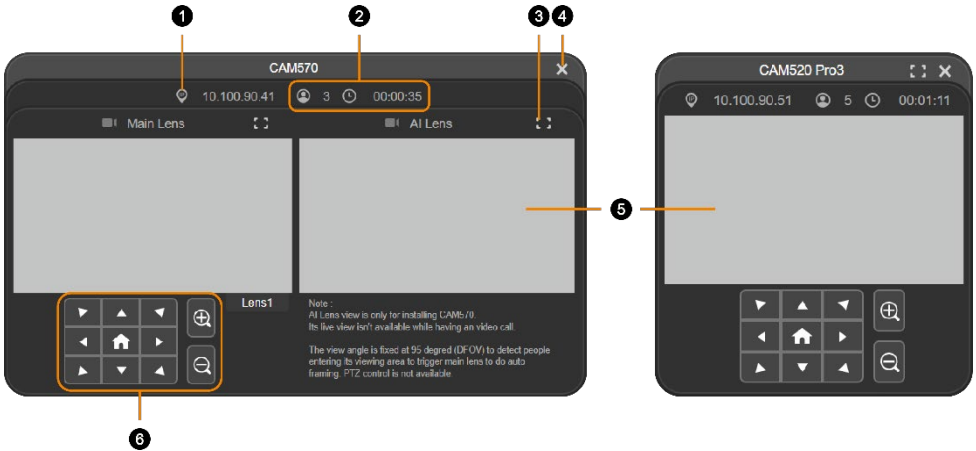


1. **Name**
Name the device.
2. **Information**
Expand and view the device information, such as firmware version. Click again to collapse.
3. **Open Live View**
Please refer to <[Floating Live View Overview](#)>.
4. **Web Interface**
Access the device's web interface.
5. **Edit IP Address**
Switch between static IP and DHCP connection. The default static IP address is **192.168.1.168**.
6. **Setting**
Configure audio and video settings.

7. Expansion Speakerphone or Microphone (VC devices only)

View connected expansion speakerphones or microphones.


Floating Live View Overview



The floating live view may vary based on the device and firmware version.

1. IP Address

2. Head Count, Video Transmission Duration

Click the **head count** icon  to display head count and the duration of your video transmission. Click the icon again to hide the information.

3. Full Screen


Expand the live view to full screen. Click again or press **Esc** on your keyboard to exit full screen.

4. Close

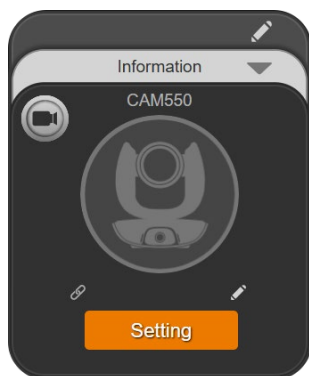
Close the floating live view and stop transmitting video.

5. Live View

6. Pan, Tilt, Zoom Controls

Click the **home** icon  to reset the pan-tilt position to the center.

Configure Device Settings



USB Device




IP Device

Note:

- All tabs and settings in this section apply to **USB devices**.
- AVer Room Management is **device-sensitive**. Tabs and settings may vary based on the device.

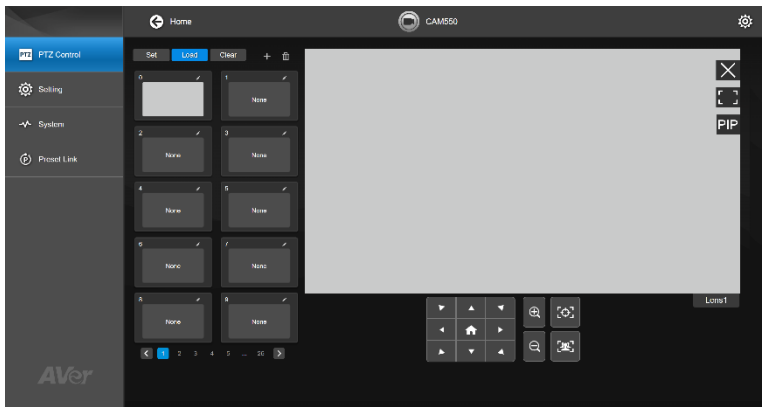
To configure device settings, you can do any of the following:

- **USB Device:** Click **Setting** on the device card in the Device Control page.
- **IP Device:** Click the **link** icon  on the device card in the Device Control page. It will open the device's web interface in your browser.

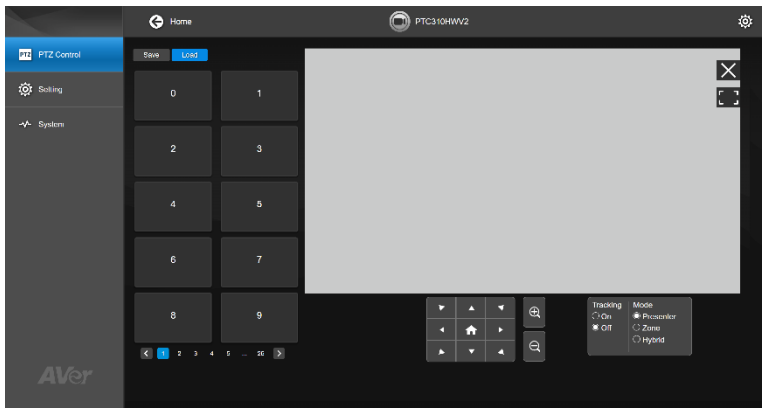
PTZ Control

The PTZ Control interface may vary based on the device and firmware version.

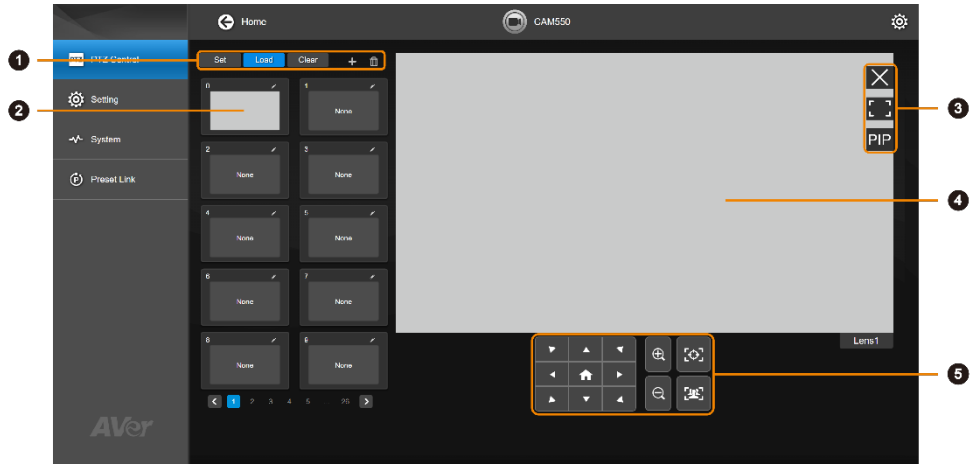
- Interface 1
Video Conferencing Cameras



- Interface 2
Professional Tracking Cameras



Interface 1







1. Preset Functions

2. Preset Thumbnail




Click the **pencil icon**  to name a preset.


3. Display Controls

- Stop Live View  : Pause the video stream. Click the **camcorder icon**  to resume video stream.
- Full Screen  : Expand the live view to full screen. Click it again or press **esc** on your keyboard to exit full screen.
- Picture-in-Picture **PIP**  (Dual-Lens Camera Only)

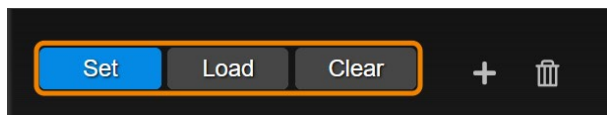
4. Live View

5. Pan, Tilt, Zoom Controls

- Home  : Reset the pan-tilt position to the center.
- One-Touch Focus  : Autofocus once.
- SmartFrame  : Frame entire group on screen once.

Note: The SmartFrame icon  also appears on the live view. To hide the icon, go to the **Setting** tab > **On-Screen Menu** > **Off**.

- **Save, Load and Clear a Preset**



To save a preset:

1. Use the pan, tilt and zoom controls to position your device.
2. Click **Set**, then a preset number to save that position.
3. Click **Yes**.

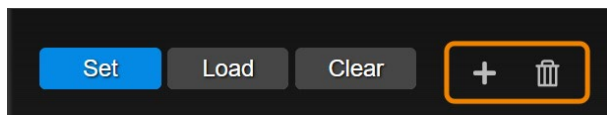
To load a preset:

Click **Load**, then a preset number to load that position.

To clear a preset:

Click **Clear**, then a preset number to clear that position.

- **Add and Delete Additional Presets (Presets 10-127)**



There are 10 available presets (0-9) by default. You can add up to 128 presets.

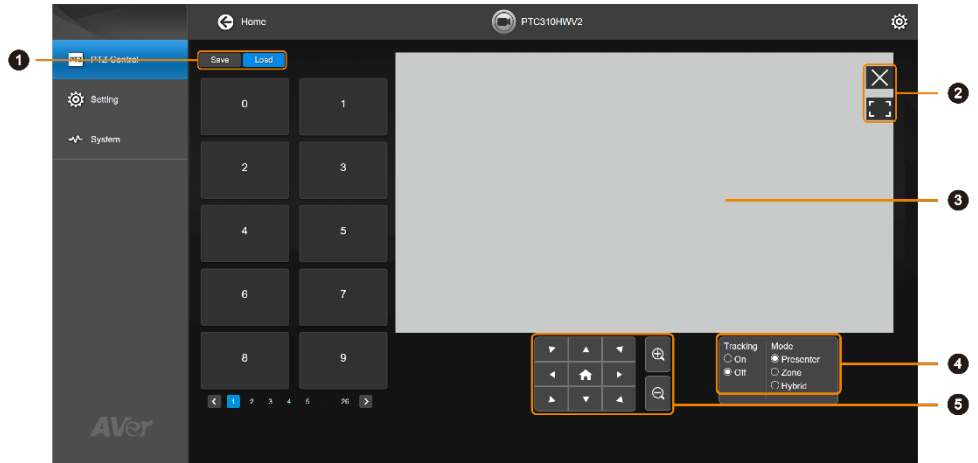
To add additional presets:

1. Select the **plus** icon, then select the preset numbers you want to add.
2. Select **Done**.

To delete additional presets:

1. Select the **trashcan** icon, then select the preset numbers you want to delete.
2. Select **Done**.

Interface 2



1. Preset Functions

2. Display Controls

- Stop Live View : Pause the video stream. Click the **camcorder** icon to resume video stream.
- Full Screen : Expand the live view to full screen. Click it again or press **esc** on your keyboard to exit full screen.

3. Live View

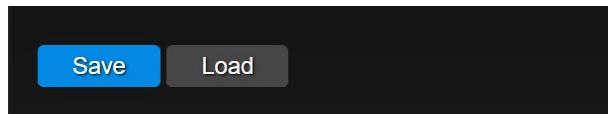
4. Tracking Control Panel

Select a tracking mode to follow the presenter, and turn tracking on or off. Make sure you have defined the required tracking modes on the device's web interface.

5. Pan, Tilt, Zoom Controls

Home : Reset the pan-tilt position to the center.

- **Save and Load a Preset**



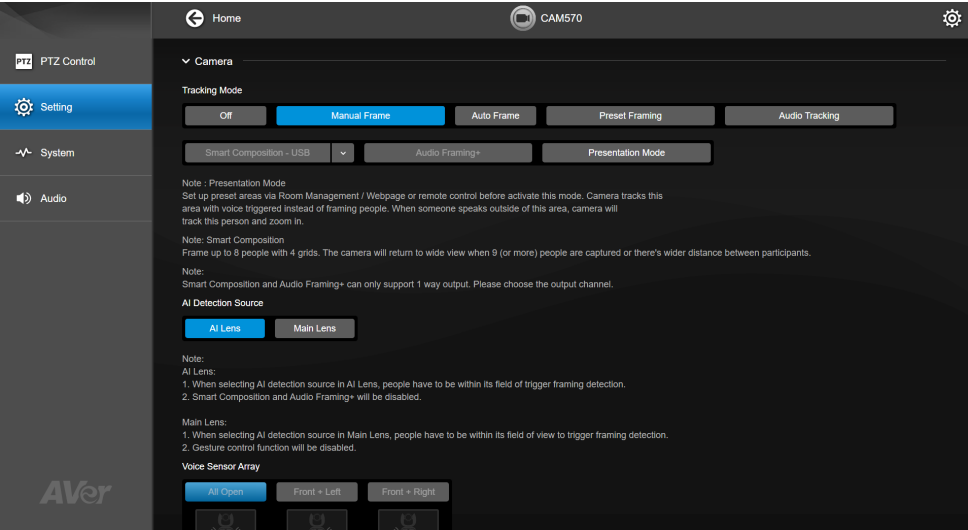
To save a preset:


1. Use the pan, tilt and zoom controls to position your device.
2. Click **Save**, then a preset number to save that position.
3. Click **Yes**.

To load a preset:

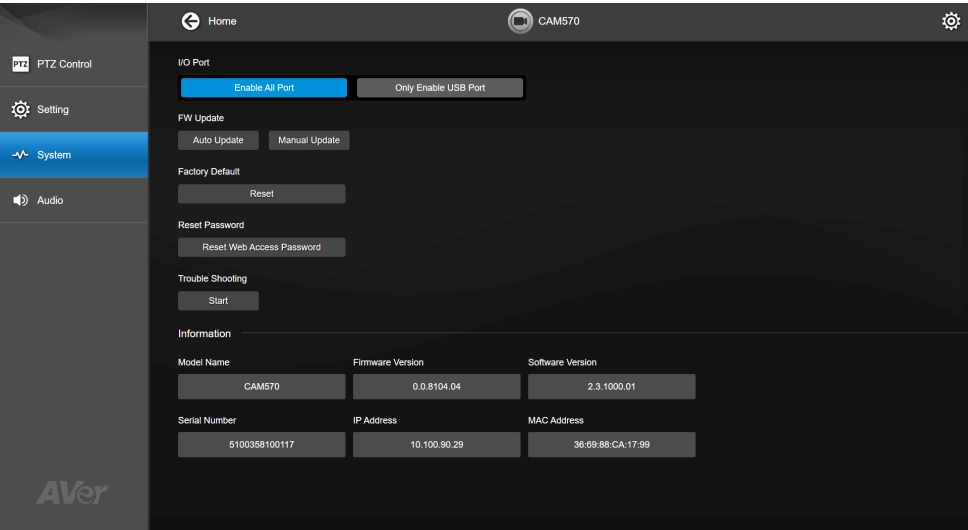
Select **Load**, then a preset number to load that position.

Settings



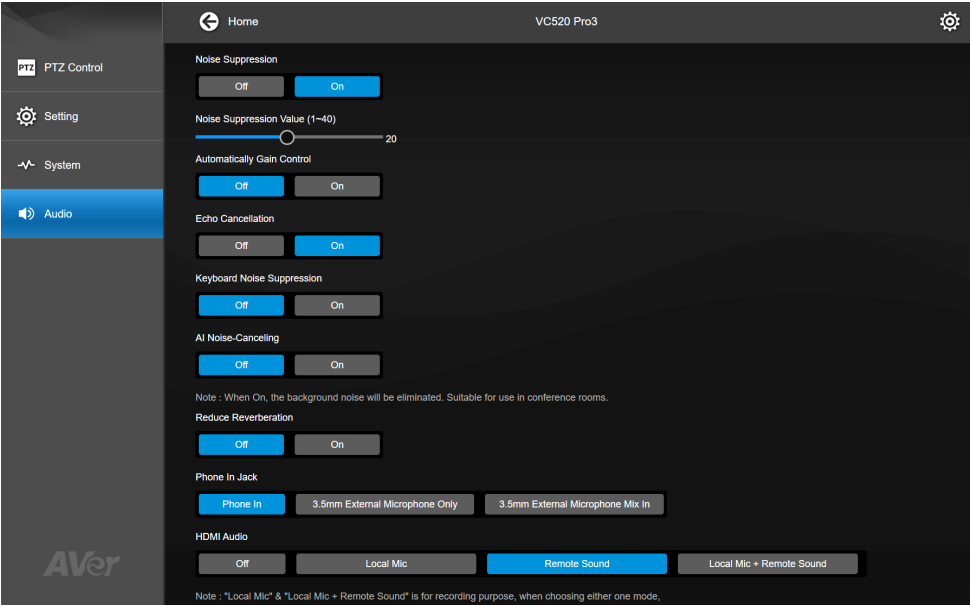
Click the chevron icon  Camera to expand or collapse a category. The features are the same as those on the device's web interface. Please refer to the device's user manual for details.

System



The features are the same as those on the device's web interface. Please refer to the device's user manual for details.

Audio



The features are the same as those on the device’s web interface. Please refer to the device’s user manual for details.

Audio Tracking

AVer Room Management lets you enable audio tracking by pairing the CAM550 Conferencing Camera with the FONE700 Ceiling Speakerphone or a supported third-party microphone system. Depending on your setup, you can use either **App Mode** (offline) or **Camera Mode** (online).

Supported Devices

- **AVer**
CAM550 Conferencing Camera
FONE700 Ceiling Speakerphone
- **Third-Party Microphones**
Nureva HDL300, HDL410
Sennheiser TCC2
Shure MXA310, MXA710, MXA910, MXA920
Yamaha RM-CG, RM-CR, RM-TT

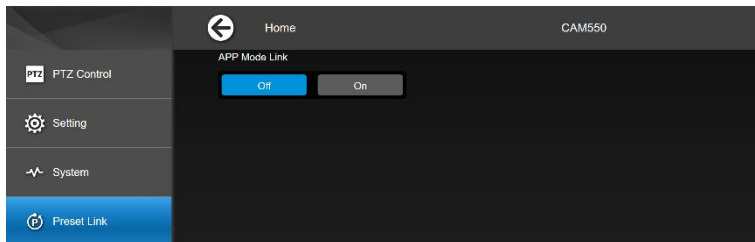
Compare Modes

- Use **App Mode** when network is not required or for dual-camera setups. AVer Room Management must stay running after setup.
- Use **Camera Mode** for more flexibility with third-party microphones.

Features	App Mode	Camera Mode
Requires network connection	× USB connection	✓ Only the setup requires USB connection.
Supported microphone pairing	✓ CAM550 ↔ FONE700 only	✓ CAM550 ↔ FONE700 and third-party microphones
Supports dual-camera audio tracking	✓	×
Use of AVer Room Management	✓ Required for setup and audio tracking, software must stay running	✓ Only required for setup, software can be closed afterwards

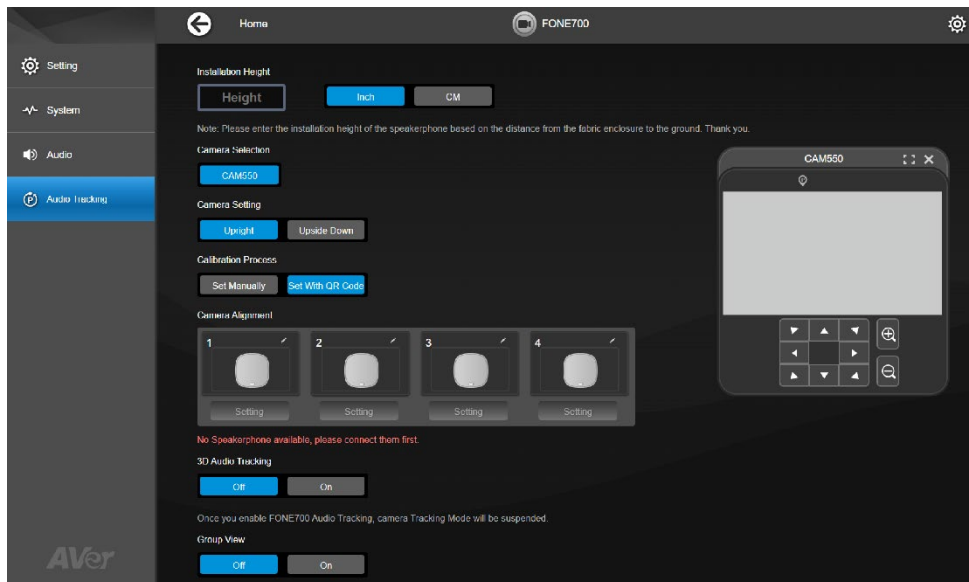
Set Up in App Mode

1. Connect the CAM550 and FONE700 to your computer running the software using a USB cable.
2. Open AVer Room Management, the device cards of CAM550 and FONE700 will appear in the Device Control page.
3. Click **Setting** on the device card of CAM550 > go to **Preset Link** tab > Turn on **App Mode Link**.




4. Go back to the Device Control Page. Click **Setting** on the device card of FONE700 > go to **Audio Tracking** tab > follow the instructions in [Set Up FONE700 Ceiling Speakerphone](#) to finish setting up.

Set Up FONE700 Ceiling Speakerphone



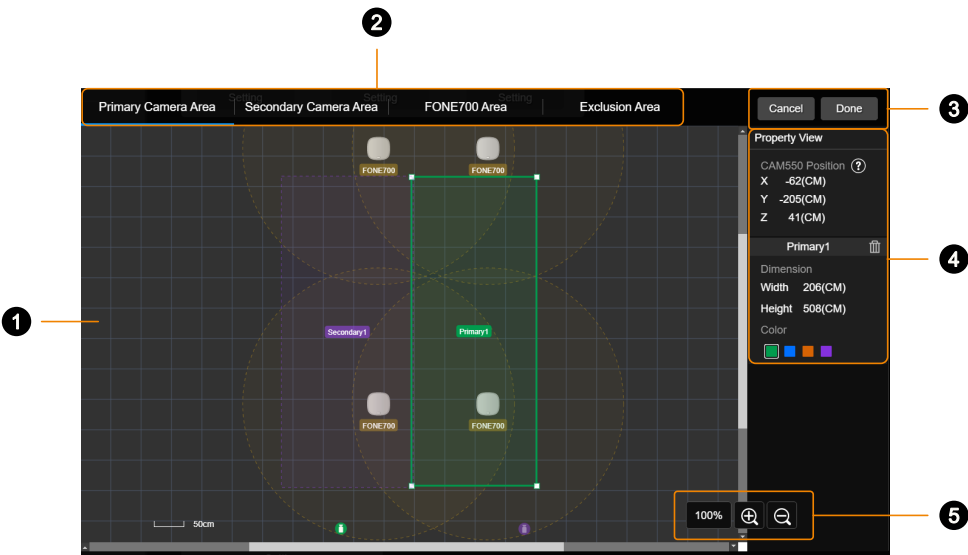
Follow the instructions and complete each setting in order.

Item	Description
Installation Height	Enter the distance from the FONE700 fabric enclosure (not the ceiling) to the ground , in inch or centimeter.
Camera Selection	Only CAM550 is supported at this time.
Camera Setting	<ul style="list-style-type: none"> Upright: Use when camera is upright. Upside Down: Use when camera is mounted upside down.
Calibration Process	<ol style="list-style-type: none"> Select how you want to calibrate the first FONE700: <ul style="list-style-type: none"> Set Manually: Calibrate with on-screen instructions. Set With QR Code (default): <ol style="list-style-type: none"> Stick the included QR Code alignment sticker on the FONE700. Select the AVer logo direction of the FONE700 in the view. Adjust the camera's pan, tilt, and zoom to fit the QR code in the red frame. When the frame turns green and the QR code is recognized, click Calibration. Fit 50% – 75% of the FONE700 in the green frame for better accuracy. After calibrating the first FONE700, you'll be prompted to select how you want to calibrate the other daisy-chained FONE700s: <ul style="list-style-type: none"> Manual Alignment: Calibrate with on-screen instructions. Finish and Set Speakerphone Position: Calibrate by entering their 3D distances from the first one.
Camera Alignment	<ol style="list-style-type: none"> Select a daisy-chained speakerphone in Camera Selection. Click Setting, and finish calibrating manually or by entering 3D distances. Click Redo on the first FONE700 to recalibrate, if needed. You can also click the pencil icon  on the speakerphone thumbnail to rename.
3D Audio Tracking	Turn on to enable FONE700 audio tracking. When turned on, the CAM550's own tracking modes, such as Presentation Mode, will be turned off.
Group View	Frames multiple active talkers on screen when the FONE700 picks up a conversation.
Trigger Speed	Select an audio tracking trigger speed. Slower speed is useful for

	<p>ignoring short utterances during audio tracking.</p> <ul style="list-style-type: none"> • Slow: Audio track after 2-3 seconds. • Medium: Audio track after 1-2 seconds. • High: Audio track immediately.
Audio Tracking Interval	<ul style="list-style-type: none"> • Select a delay before the camera defaults to Preset 0 (which can be defined by the user) when no sound is detected. • Select OFF and the camera will stay at the last position.
Setting Lock	Lock all current settings to prevent changes.
Dual Camera Tracking (App Mode only)	Connect two CAM550s to your computer, turn on this feature, then click Setting to configure tracking areas. Please refer to < Set Up Dual-Camera Tracking >.
Alignment Settings	Export or import the installation height, calibration, and dual camera tracking configurations.

Set Up Dual-Camera Tracking

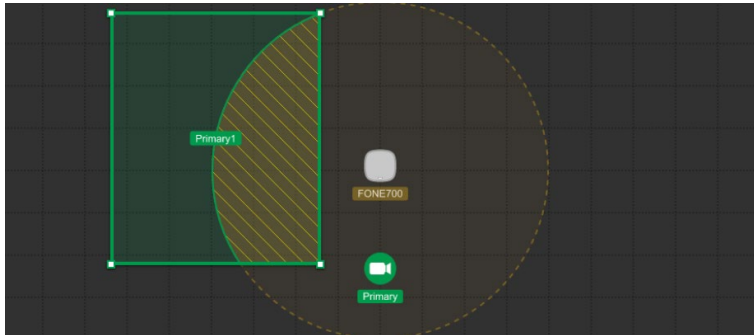
When using two CAM550 cameras in a meeting room, you can customize the effective tracking area. For best results, set the area to cover angles where the cameras have a clear, direct view of participants' faces.



- 1. **Workspace**
Drag and drop to set up, resize or move the tracking area.
- 2. **Setting Tabs**
Set up tracking areas for the primary and secondary CAM550, and view the FONE700 effective audio tracking area.
- 3. **Save and Exit**
Click **Done** to save settings.
- 4. **Property View**
View and edit the tracking area and dimension.
- 5. **Zoom in and out**
Adjust the workspace display size.

To set up an effective tracking area:

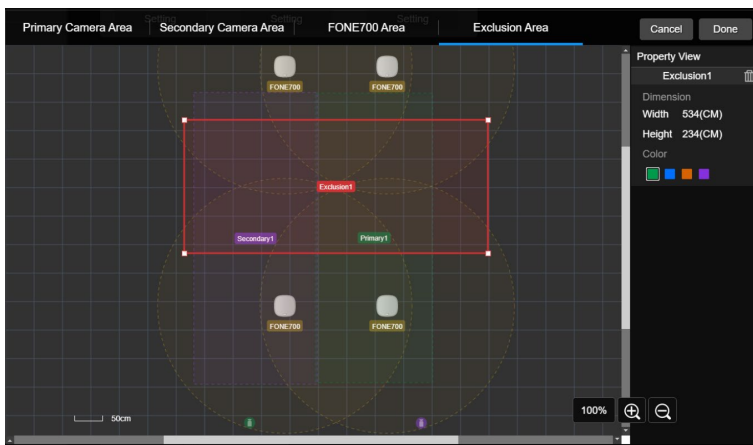
1. Go to the **Primary Camera Area** tab, drag a rectangle on the workspace to define the primary camera's tracking area. You can add up to 8 tracking areas for each camera.
The overlap between this area and the speakerphone's audio range becomes the effective tracking area.



2. Resize the area using the selection handles or enter exact dimensions in the **Property View**. You can also change the highlight color.
3. Repeat the steps above to define the secondary camera's tracking area.

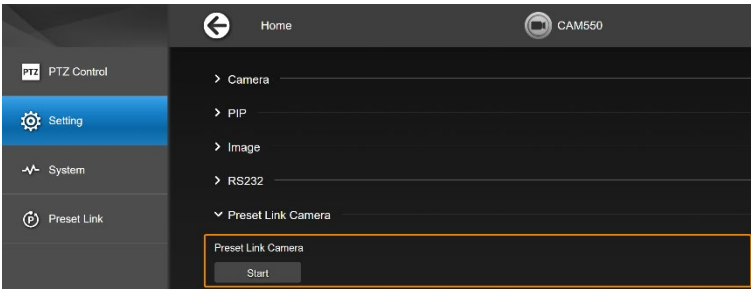
To set up an exclusion area:

1. Go to the **Exclusion Area** tab, drag a rectangle on the workspace to mark areas you want to exclude from tracking. You can add up to 16 exclusion areas.
2. To delete an exclusion area, select it in the **Property View** and click the **trash can** icon.

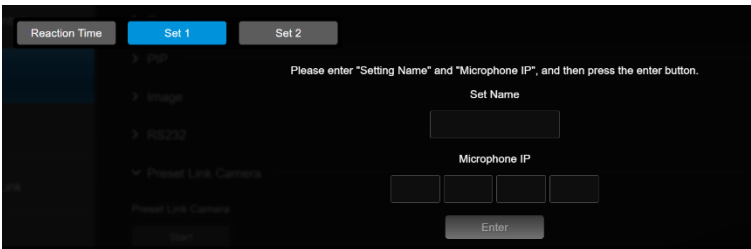


Set Up in Camera Mode

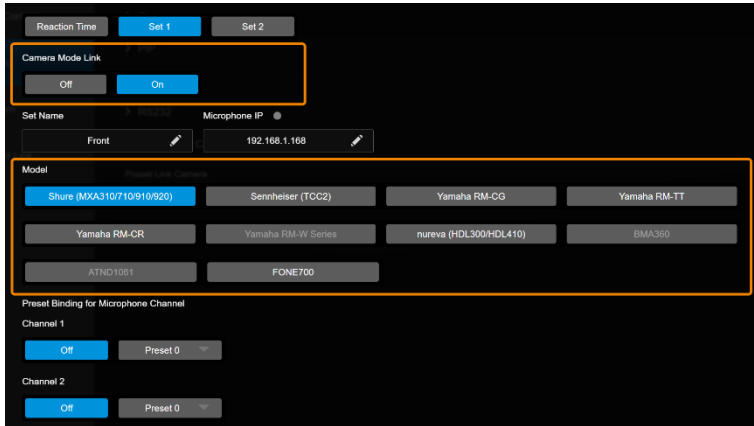
1. Make sure the CAM550 and microphone are connected to same local area network (LAN). Also connect the CAM550 and FONE700 to your computer running the software using a USB cable.
2. Open AVer Room Management, the device cards of CAM550 and FONE700 will appear in the Device Control page.
3. Click **Setting** on the device card of CAM550 > go to **Setting** tab > scroll to the bottom and find **Preset Link Camera** > click **Start**.



4. Enter **Set Name** to identify the location and **Microphone IP**, then click **Enter**. AVer Room Management lets you set up two sets of camera and microphone configurations.



5. Turn on **Camera Mode Link** to enable audio tracking, then select the microphone model. Check the indicator next to Microphone IP to make sure it's online (● gray: offline / ● green: online).



6. Depending on the microphone model, do any of the following:
- FONE700: Go back to the Device Control Page. Click **Setting** on the device card of FONE700 > go to **Audio Tracking** tab > follow the instructions in [<Set Up FONE700 Ceiling Speakerphone>](#) to finish setting up.
 - Third-party microphone: Pair the microphone channels with camera presets, if any.
7. Set up **Reaction Time**:
- Time to trigger Preset: Select a delay before the camera goes to a preset.
 - Time to go back to Preset 0: Select a delay before the camera goes to preset 0 when the microphone detects no sound.
8. (Optional) Click **Set 1** or **Set 2** to switch between two sets of camera and microphone configurations.
9. The setup is complete.

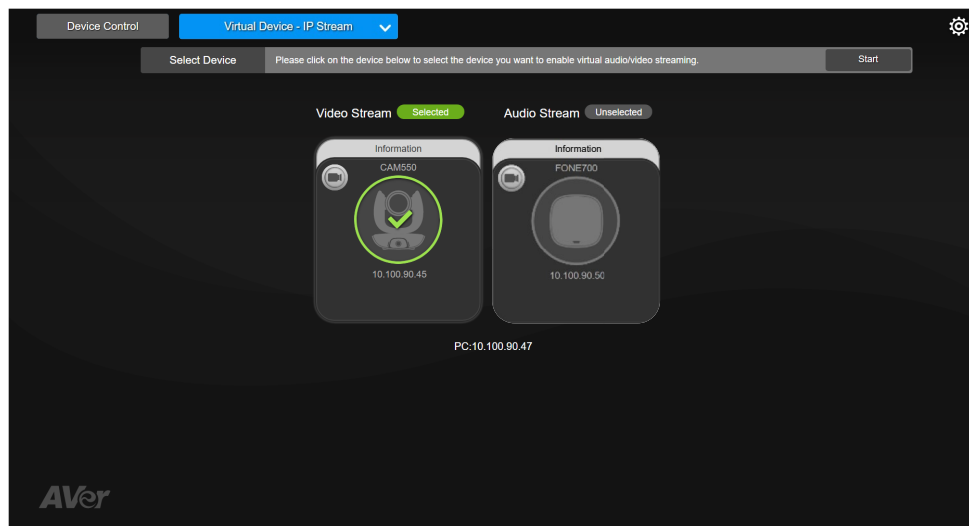
Note: After initial setup, you can enable audio tracking directly from the **3D Audio Tracking** toggle on the FONE700's web interface or a similar toggle on the third-party microphone's interface.

A USB connection to AVer Room Management is only needed for switching between configurations, calibrating the microphone, or aligning the camera.

Video Conferencing Features

Note: All features in this section require the Virtual Device page.

IP Stream



IP Stream allows you to send a single video and audio feed over IP to video conferencing software such as Teams, Skype and Zoom.

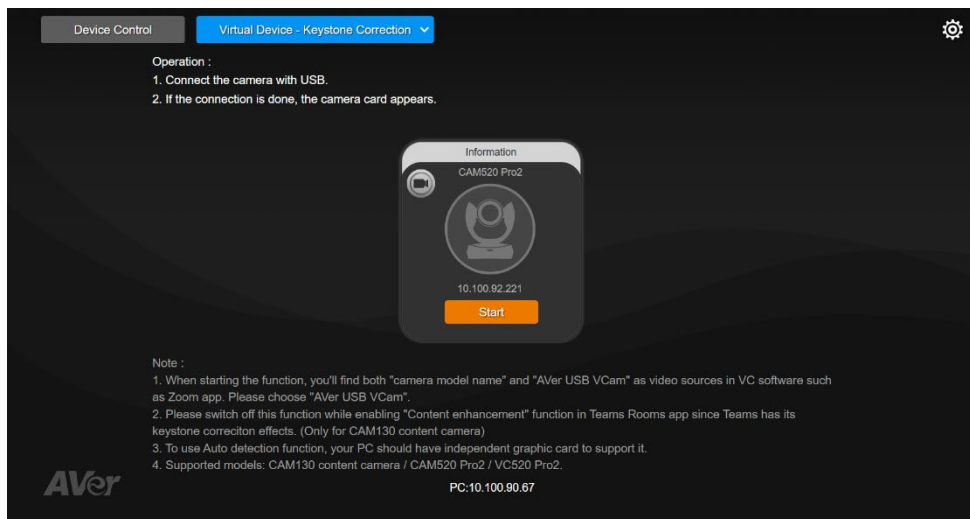
Note: Video latency may vary depending on your CPU. We recommend Intel Core i5 or higher.

To start a virtual stream:

1. Make sure your device and the computer running the video conferencing software are connected to the same network.
2. Make sure you have enabled your device's RTSP setting on its web interface.
3. Click **Virtual Device > IP Stream**, and select your device.
4. Click **Start** on the upper right corner. Enter the RTSP password, if any.
5. Open your video conferencing software. Choose **AVer USB VCam** for video, **AVer VMic Device** for microphone, and **AVer VSpk Device** for speaker, not your device model name.
6. For pan, tilt and zoom controls, use a remote control or VISCA commands

7. To stop a virtual stream, click **Stop** on the device card.

Keystone Correction (Windows only)



Keystone Correction adjusts the geometry of an image to make it appear rectangular and aligned.

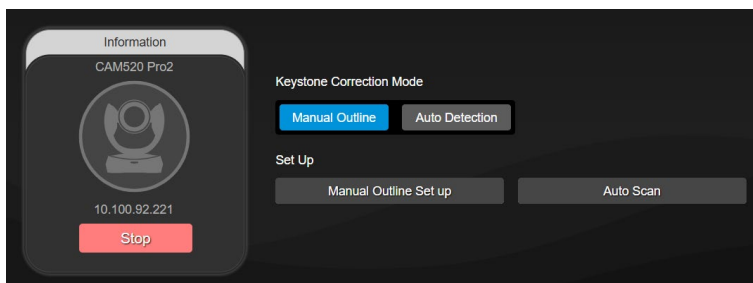
To use Keystone Correction:

1. Connect your device to the computer with a USB cable.
2. Click **Virtual Device > Keystone Correction**, and click **Start** on your device card.
3. Open your video conferencing software. Choose **AVer USB VCam** for video, not your device model name.

Note: When using Teams Room, disable **Content Enhancement** for a better result.

4. Select **Manual Outline** or **Auto Detection**, then adjust the border as follows.

- **Manual Outline**



① Select **Manual Outline** > **Manual Outline Set up**.

② Drag the corners of the square to frame the area you want, such as the whiteboard. Click

Next.



③ Click **Edit** to resize. Click **Save** to finish.

- **Auto Detection**

Note: Your computer must have an independent graphic card to support Auto Detection.

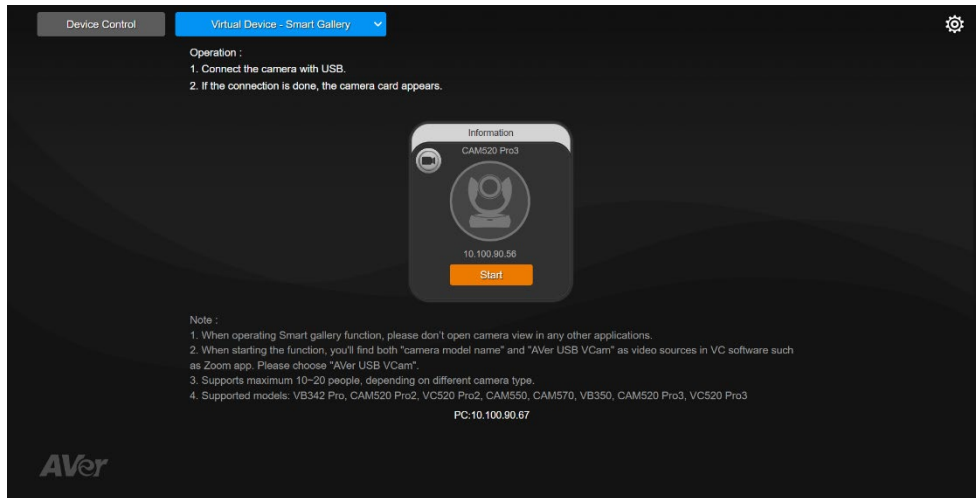
① Select **Auto Detection** > **Auto Scan**.

② If prompted, follow the on-screen instructions to download and install the keystone package.

③ Click **Edit** to resize. Click **Save** to finish.

5. To stop using Keystone Correction, click **Stop** on the device card.

Smart Gallery

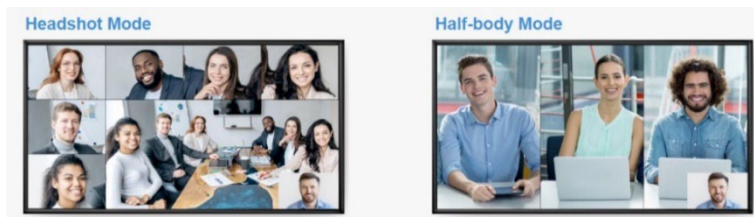


Smart Gallery creates a close-up frame for each participants and present them in a single stream composited gallery.

Note: Smart Gallery supports 10-20 people depending on the AVer device.

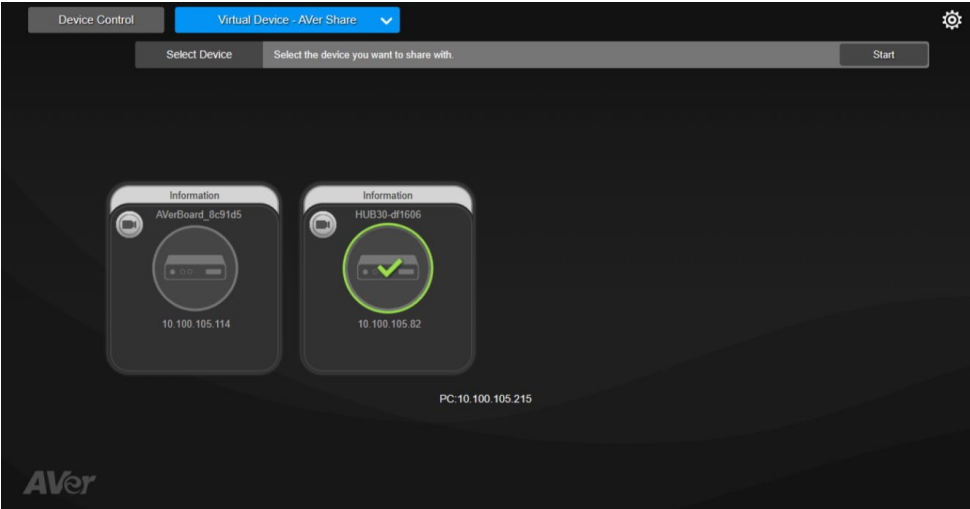
To use Smart Gallery:

1. Connect the device to the computer with a USB cable.
2. Click **Virtual Device > Smart Gallery**, and click **Start** on the device card.
3. Select a layout.



4. Open your video conferencing software. Choose **AVer USB VCam** for video, not your device model name.
5. To stop using Smart Gallery, click **Stop** on the device card.


AVer Share



AVer Share is only available on AVer matrix switchers. Please refer to the device's user manual for details.

Troubleshoot

Can't open AVer Room Management.

Click the **Show Hidden Icons** arrow on the taskbar, right-click the AVer Room Management icon , and select **Restore**.